

▲ Insider Tip

The Mirage Media Server detects the presence of audio cables plugged into the analog audio jacks. Turning on the server with empty audio jacks will prevent those outputs from operating until the server is restarted.

Audio and Video Connections

Make the necessary audio and video connections as depicted.

Ethernet Connections

The MMS requires a wired connection to your LAN and access to the Internet. The server is configured to obtain an IP address via DHCP automatically.

First Run

Once you have made all necessary connections, power up the server. If you have connected the video output, wait for the Now Playing screen to display before configuring the server.

Configuration

Using a computer on the same network, open the configuration utility [Figure 1] with Internet Explorer, Safari or Firefox to the default configuration address: <http://Mirage-1/config>

You can also look up the IP address of the server using the DHCP client table in your router's interface.

Automated Synchronization

In the server configuration utility, on the firmware tab, you will find links to setup the synchronization utility to automatically upload new iTunes and Windows Media Player content to your server.

Browser-based Control

To control the Mirage media server using a web browser, simply browse to the server address. Example: <http://Mirage-1/>

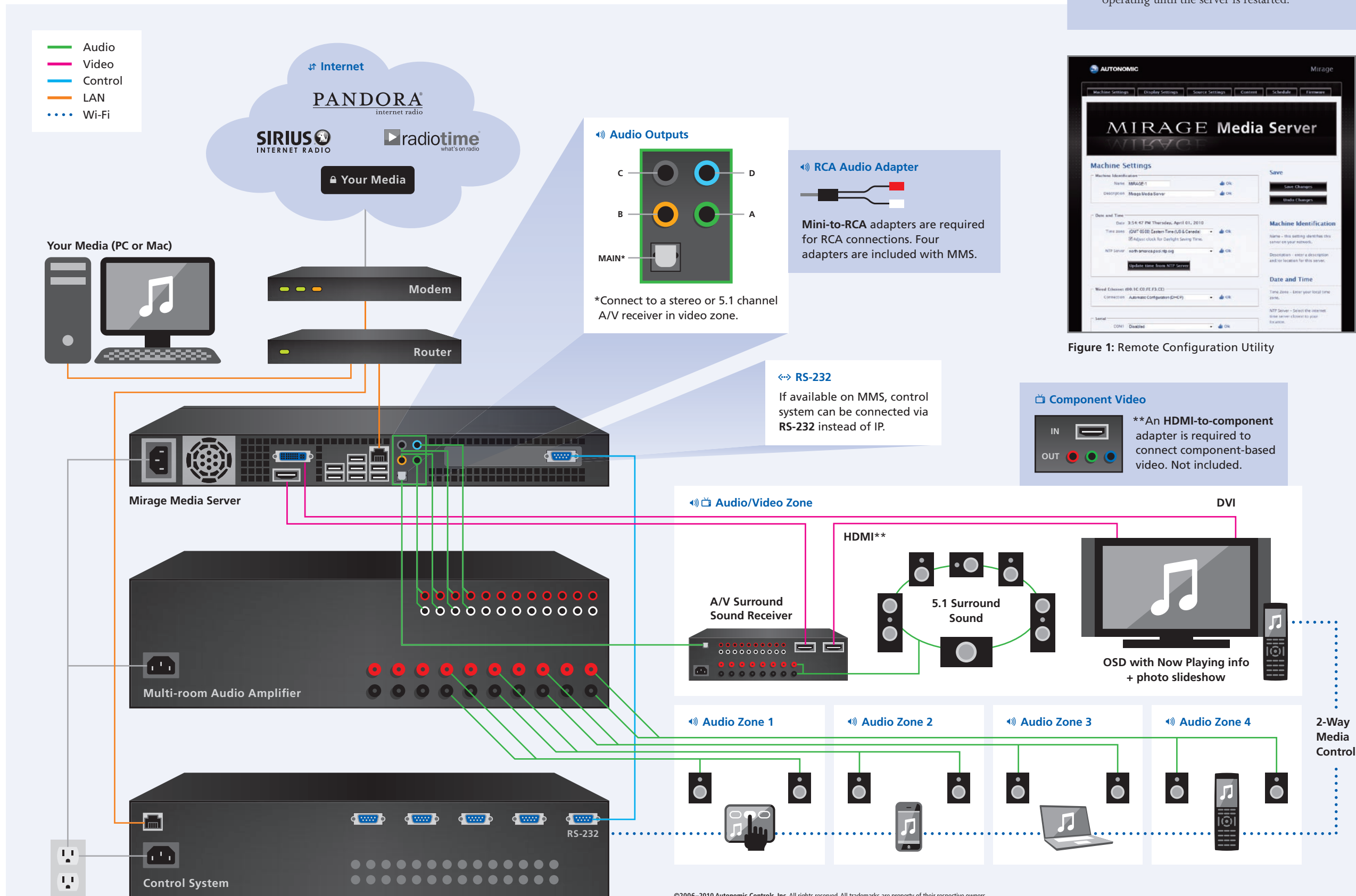


Figure 1: Remote Configuration Utility